

**Programmes After Market Services (P.A.M.S.)
Technical Documentation
NME-2A Series Transceivers**

**Non-Serviceable
Accessories**

Contents

	Page No
List of Non-Serviceable Accessories	5
Mounting Bracket MBE-2	5
Specification	5
View of Mounting Bracket	5
Assembly Parts	5
Handset Cradle CRE-1	6
Specification	6
View of Handset Cradle	6
Assembly Parts	6
Mounting Plate MKE-1	7
Specification	7
View of Mounting Plate	7
Assembly Parts	7
Swivel Mounting Plate HHS-1	8
Specification	8
Exploded view of Swivel Mounting Plate	8
Assembly Parts	8
System Cable SCM-1/SCM-3	9
Specification	9
View of System Cable	9
Assembly Parts	9
Vehicle Installation Cable DKS-3	10
Specification	10
View of Vehicle Installation Cable	10
Assembly Parts	10
Handsfree Microphone HFM-14	11
Specification	11
View of HFM-14	11
Assembly Parts	11
Handsfree Speaker HFS-10	12
Specification	12
View of HFS-10	12
Assembly Parts	12
Extension Cable XCM-2	13
Specification	13

View of XCM-2	13
Assembly Parts	13
SIM Card Reader CAE-2	14
Specification	14
View of XCM-2	14
Assembly Parts	14

List of Non-Serviceable Accessories

Mounting Bracket MBE-2

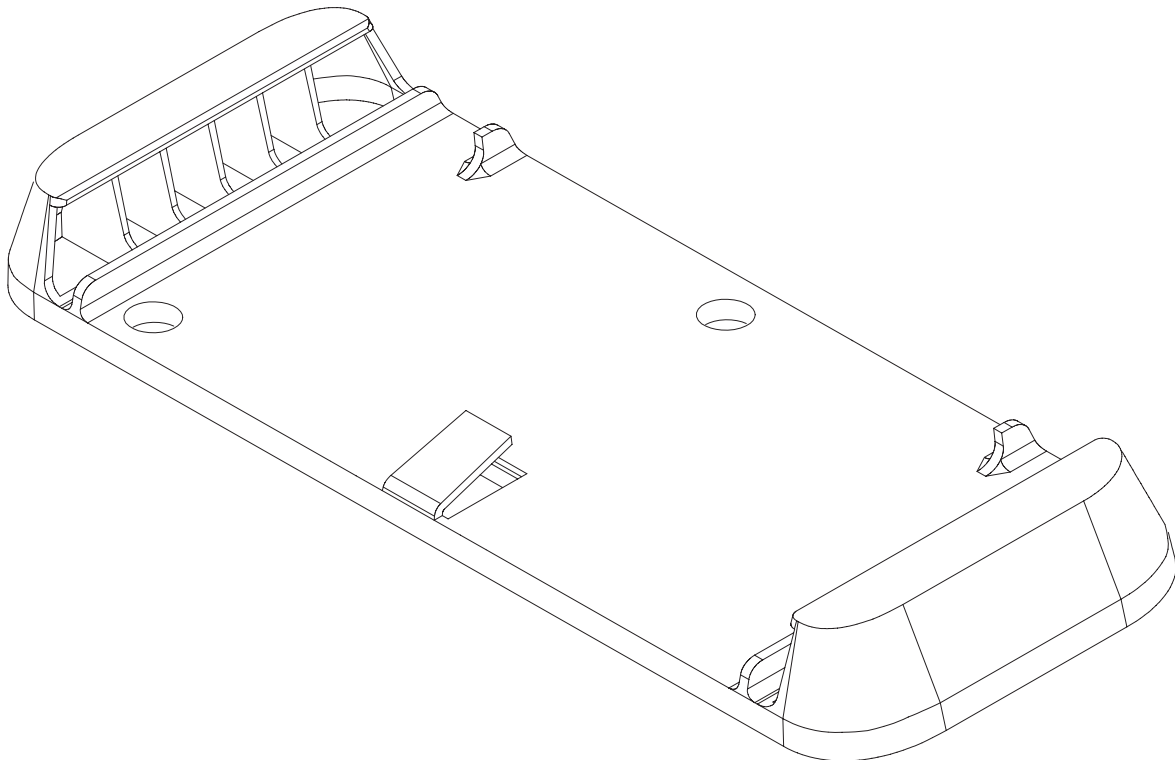
The MBE-2 mounting bracket provides a method of fixing the mobile phone to the vehicle interior.

Specification

Dimensions (h x w x d): *32 x 204 x 92 mm*

Weight: *87 g*

View of Mounting Bracket



Assembly Parts

ITEM	Q'TY	CODE	DESCRIPTION	VALUE, TYPE
	1	9450589	Mounting Bracket	
	1	9460124	Spacer	(6 pcs)
	3	6243225	Screw 2.9x22	DIN7981
	3	6293001	PT screw RB20x30	

Handset Cradle CRE-1

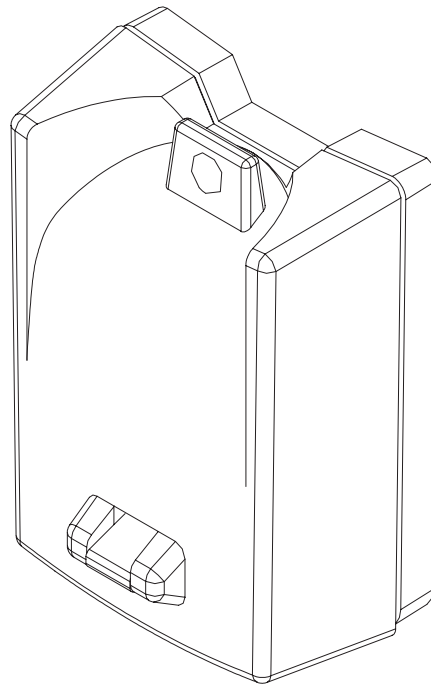
The cradle acts as a holder for the handset HSE-6XN.

Specification

Dimensions (h x w x d): *81 x 57 x 37 mm*

Weight: *80 g*

View of Handset Cradle



Assembly Parts

ITEM	Q'TY	CODE	DESCRIPTION	VALUE, TYPE
	1	0650001	Handset Cradle CRE-1	

Mounting Plate MKE-1

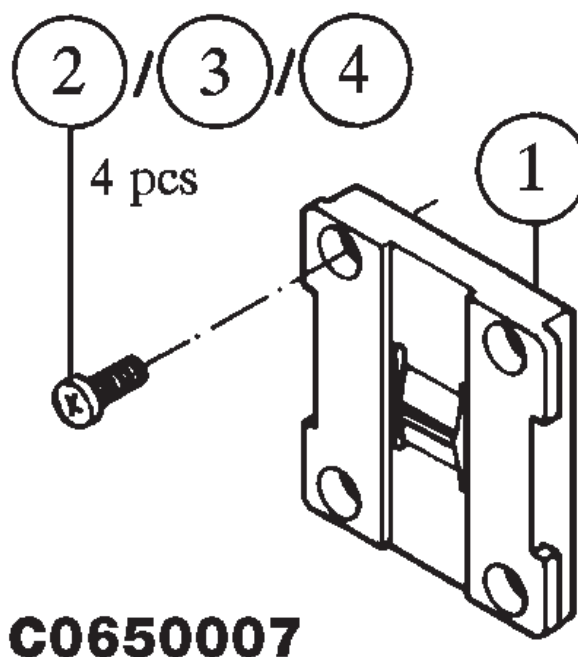
The MKE-1 mounting plate provides a method of fixing the handset cradle and the external SIM card reader to the vehicle interior.

Specification

Dimensions (h x w x d): *7.3 x 45 x 48 mm*

Weight: *8 g*

View of Mounting Plate



Assembly Parts

ITEM	Q'TY	CODE	DESCRIPTION	VALUE, TYPE
1		9460016	Cradle adapter CRE-1	3D 21416
2	4	6270405	Screw 3.5 x 16	DIN7981 FeZn black
3	4	6150330	Screw M3 x 8	4D 22336
4	4	6292279	Screw KB30 x 10	

Swivel Mounting Plate HHS-1

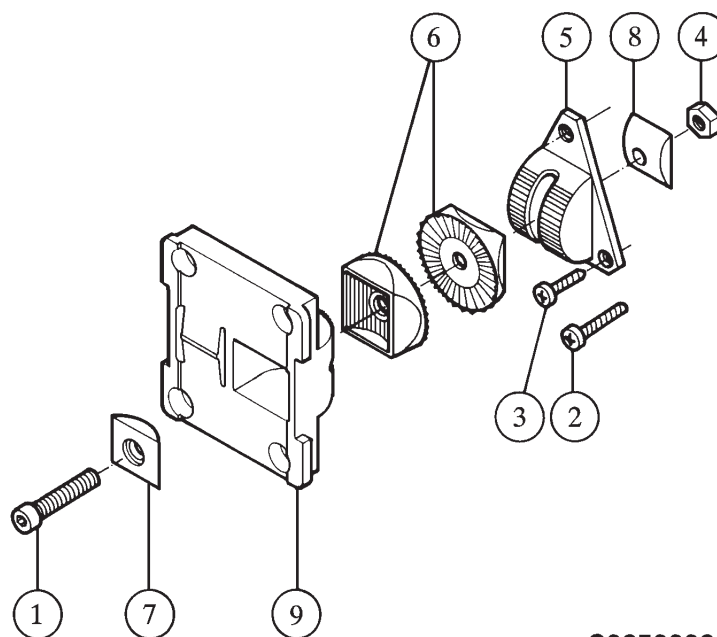
The HHS-1 swivel mounting plate provides an alternative (to MKE-1) method of locating the handset cradle.

Specification

Dimensions (h x w x d): 20 x 44.5 x 48 mm

Weight: 30 g

Exploded view of Swivel Mounting Plate



C0650006

Assembly Parts

ITEM	Q'TY	CODE	DESCRIPTION	VALUE, TYPE
1		6190460	Screw M5 x 20	DIN912 FeZn 8.8 ye
2		6270405	Screw 3.5 x 16	DIN7981 FeZn black
3		6292279	PT screw KB30 x 10	WN1442 FeZn black
4		6310601	Nut M5	DIN934 FeZn yellow
5		9302119	Joint support	3D 20097
6	2	9302126	Joint part	3D 20098
7		9310261	Support bracket of screw	4D 20439
8		9310279	Support of nut	4D 20440
9		9450036	Cradle holder	2D 21419

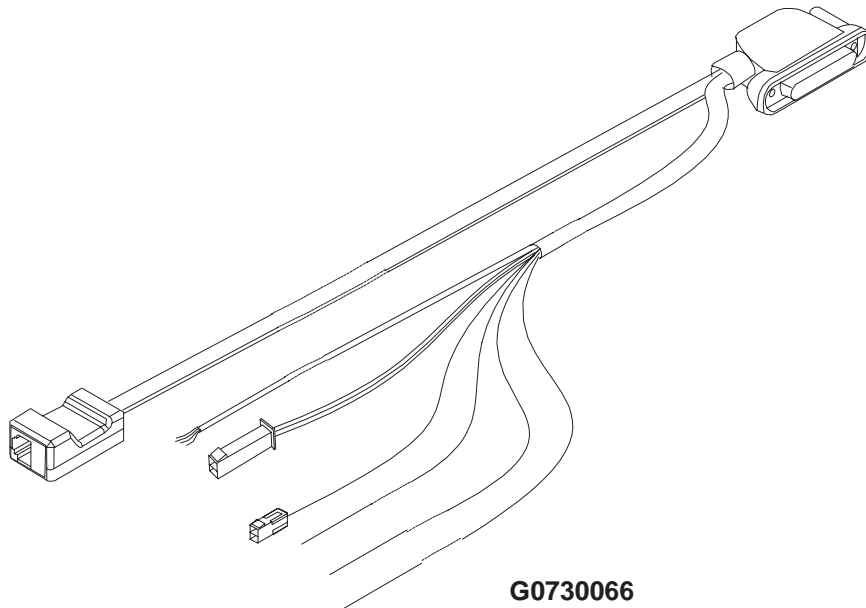
System Cable SCM-1/SCM-3

The system cable connects the phone to the vehicle supply and accessories.

Specification

- Connectors: *25 pole DSUB female connector
8 pole modular connector
2 x molex mifit Jr. two way connector*
- Wire connections: *6 wires including:
+12 V and GND for power supply
IGNS for ignition sense
CRM for car radio mute
ANTC for motor antenna*

View of System Cable



Assembly Parts

ITEM	Q'TY	CODE	DESCRIPTION	VALUE, TYPE
		0730066	System Cable SCM-1	
		0730107	System Cable SCM-3	

Vehicle Installation Cable DKS-3

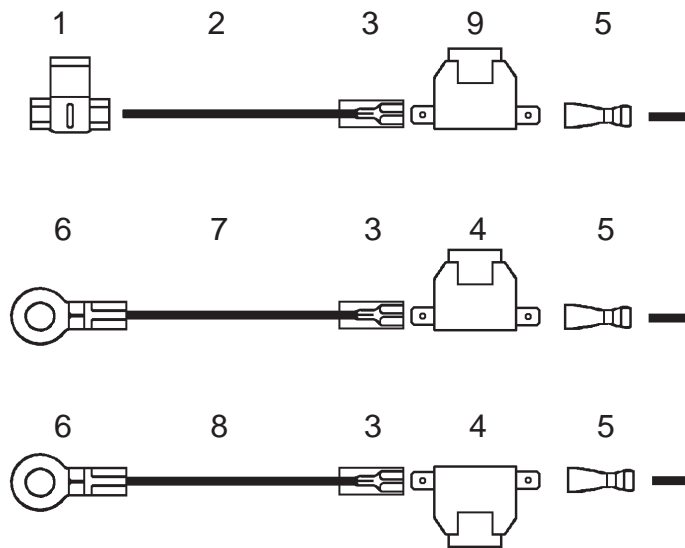
The vehicle installation cable connects the system cable to the vehicle supply and ignition sense.

Specification

Fuse sizes:

3 A and 1 A

View of Vehicle Installation Cable



Assembly Parts

ITEM	Q'TY	CODE	DESCRIPTION	VALUE, TYPE
1			Tap splice	AMP 735410
2			Conductor 1 * AJ 1.5 mm ²	300 mm 5 mm blue
3	3		Flat connector	AMP2-160256/ 926539-6
4	3		Fuse holder (pico fuse)	Littlefuse 445714/ 257003 (Fuse 3 A)
5	3		Flat connector	AMP KKA2507FLT
6	2		Cable shoe, M8	AMP 160337-2
7			Conductor 1 * AJ 1.5 mm ²	300 mm 5 mm red
8			Conductor 1 * AJ 1.5 mm ²	300 mm 5 mm black
9			Fuse holder (pico fuse)	Littlefuse 445714/ 257001 (Fuse 1 A)

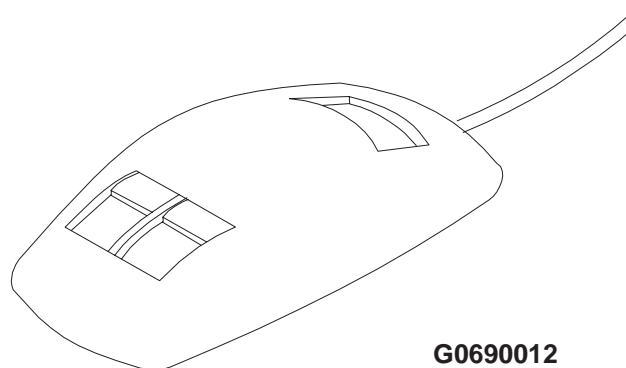
Handsfree Microphone HFM-14

The HFM-14 microphone offers handsfree operation in the vehicle interior.

Specification

Dimensions (h x w x d):	<i>16 x 24 x 43 mm</i>
Holders:	<i>double sided tape and screws</i>
Sensitivity curve:	<i>hypercardiod</i>
Bias supply voltage:	<i>1.5...8 V</i>
Bias supply current:	<i>100...500 μA</i>
Acoustical operating range (THD<1 %):	<i>35...110 dB SPL (-56...+16 dBa)</i>
Sensitivity:	<i>-41\pm4 dBV/Pa at 1 kHz, front signal (measured with mic assembled on hard plate, 30 x 30 cm)</i>
Noise (IHF-A weighting):	<i><9 μV</i>
Connector:	<i>molex microfit Jr. two way connector</i>
Cable length	<i>3\pm0.2 m</i>

View of HFM-14



Assembly Parts

ITEM	Q'TY	CODE	DESCRIPTION	VALUE, TYPE
		0690014	Handsfree Microphone HFM-14	

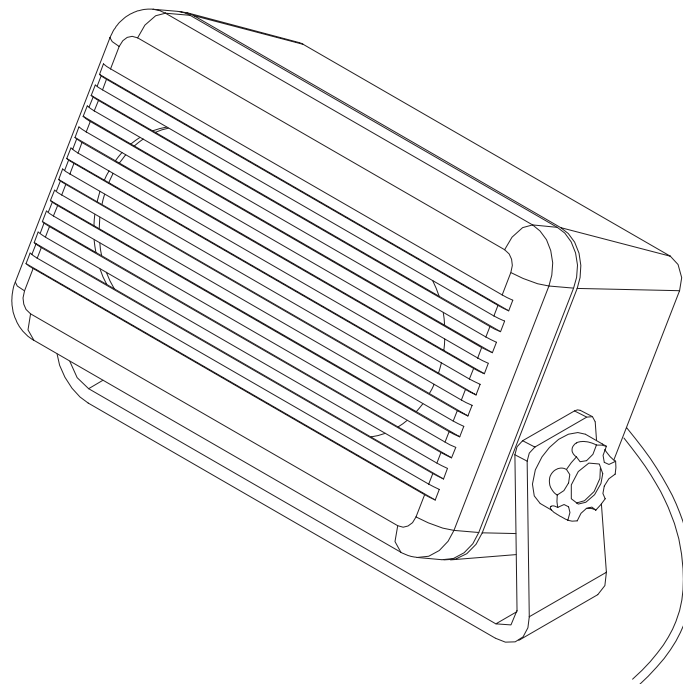
Handsfree Speaker HFS-10

Small size, high quality loudspeaker for handsfree operation in vehicle installation.

Specification

Dimensions (h x w x d):	<i>75 x 123 x 46 mm</i>
Weight:	<i>305 g</i>
Frequency range:	<i>0.25 to 3.5 kHz</i>
Sensitivity:	<i>82 ±3 dB</i>
Connector: <i>connector</i>	<i>molex minifit Jr. two way</i>
Length of cable:	<i>2 m</i>

View of HFS-10



Assembly Parts

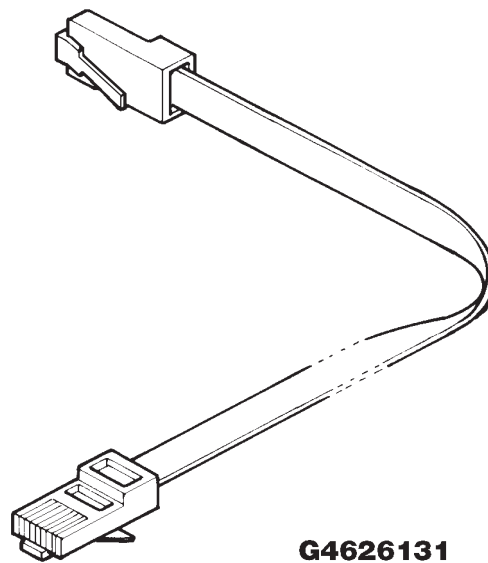
ITEM	Q'TY	CODE	DESCRIPTION	VALUE, TYPE
		0692006	Handsfree Speaker HFS-10	

Extension Cable XCM-2

Specification

Length of cable:	2m
Weight;	90g

View of XCM-2

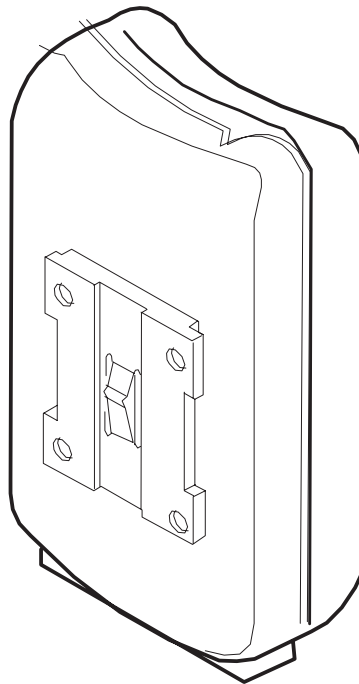


Assembly Parts

ITEM	Q'TY	CODE	DESCRIPTION	VALUE, TYPE
		4624000	Extension Cable XCM-2	

External SIM Card Reader CAE-2

Specification



View of CAE-2

Assembly Parts

ITEM	Q'TY	CODE	DESCRIPTION	VALUE, TYPE
		0630098	External SIM Card Reader CAE-2	